

Windows edition

Recommended system

Computer with an Intel Core 2 Duo processor or faster

The following Windows operating systems are supported (as of April 2014) by this driver. Use of this driver with other operating systems cannot be guaranteed.

Windows Vista (32-bit and 64-bit versions)

Windows 7 (32-bit and 64-bit versions)

Windows 8 (32-bit and 64-bit versions)

Windows 8.1 (32-bit and 64-bit versions)

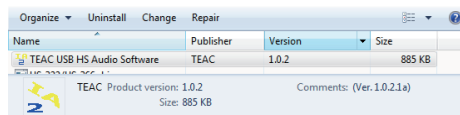
Warning before installation

Install the dedicated driver on a computer before connecting it with the unit by USB.

If you connect the unit to a computer before installing the driver on it, it will not function properly.

Precautions when installing a new driver

If dedicated driver software (1.0.2) is already installed, open Programs and Features in the Control Panel, select that version of the driver as shown below, and then uninstall it.



If you try to install a new driver without uninstalling the old one, installation will complete properly, but the driver will not work properly. If this occurs, uninstall the old version (1.0.2), and then launch the installer for the new version. In the screen shown after clicking "Setup Software,"

select "Repair TEAC USB HS Audio Software" as shown below.



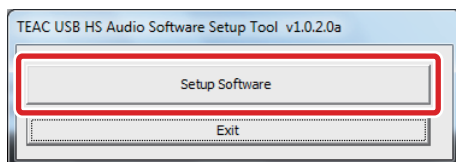
Driver installation procedures

Note: The following screen examples are from Windows 7.

1. Launch TEACUSBHSAudioSetup.exe.



2. Click Setup Software.



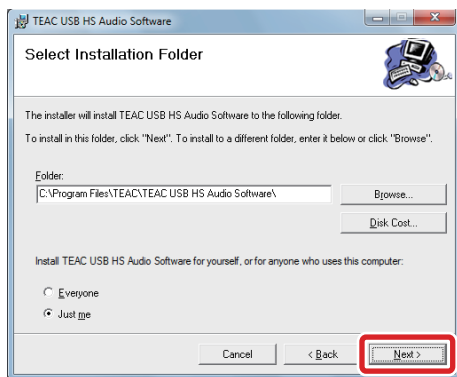
Continued on the next page →

3. Click Next.

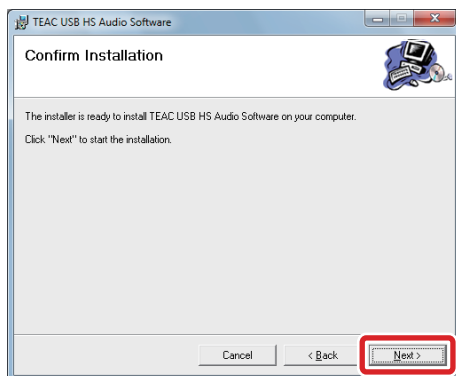


4. Click Next again.

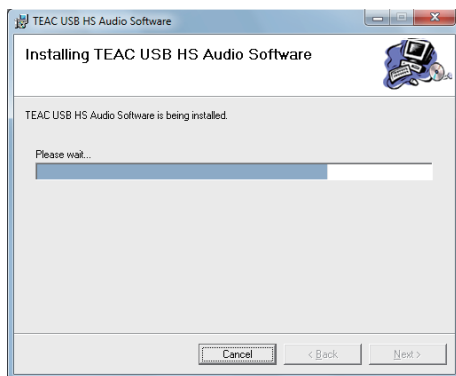
Note: To enable use of this driver for all users of the computer, check Everyone.



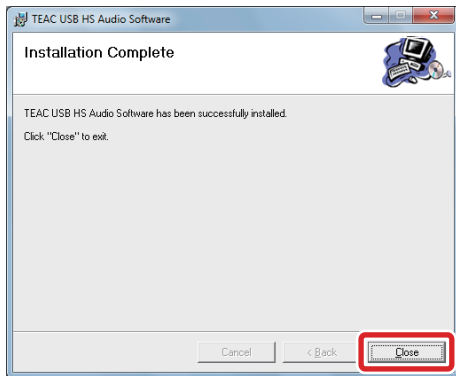
5. Click Next once more to start installation.



6. Do not use the computer for anything else during installation. Wait until installation completes.



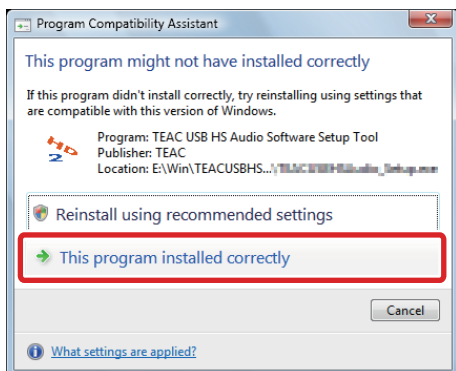
7. After installation completes, click Close to close the window.



Warning

If “Program Compatibility Assistant” appears after installation completes, be sure to select “This program installed correctly”.

If you select “Reinstall using recommended settings”, the installer will not be able to start correctly.

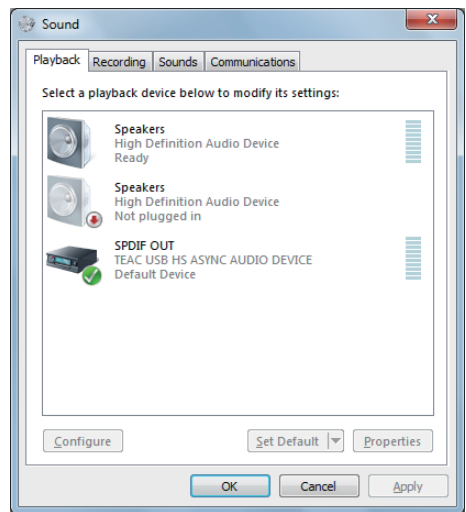


8. Follow steps 1–4 of “Playing Back Music Files Stored on a Computer” in the Owner’s Manual to connect the unit.

9. The first time you connect the unit, the driver will be installed automatically.

If the connection has been made properly, the Sound properties in the Control Panel will appear as follows.

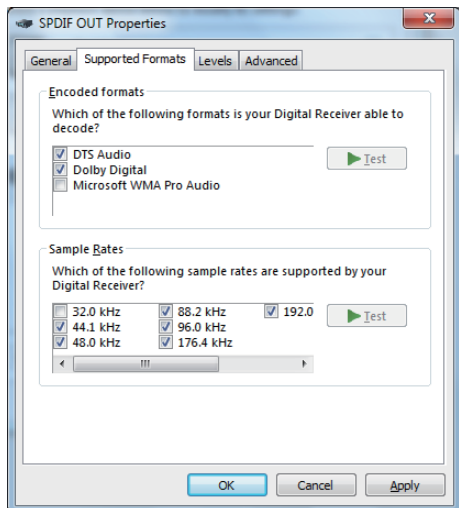
“SPDIF OUT: TEAC USB HS ASYNC AUDIO DEVICE” will appear.



Continued on the next page ➡

10. Open the properties window to set the sampling rate that you want to use.

Uncheck all the Encoded formats.



11. Follow step 5 of “Playing Back Music Files Stored on a Computer” in the Owner’s Manual to play a music file.

Note: Until a music file is played back, the unit might show that it is unlocked (USB SOURCE input indicator blinks).